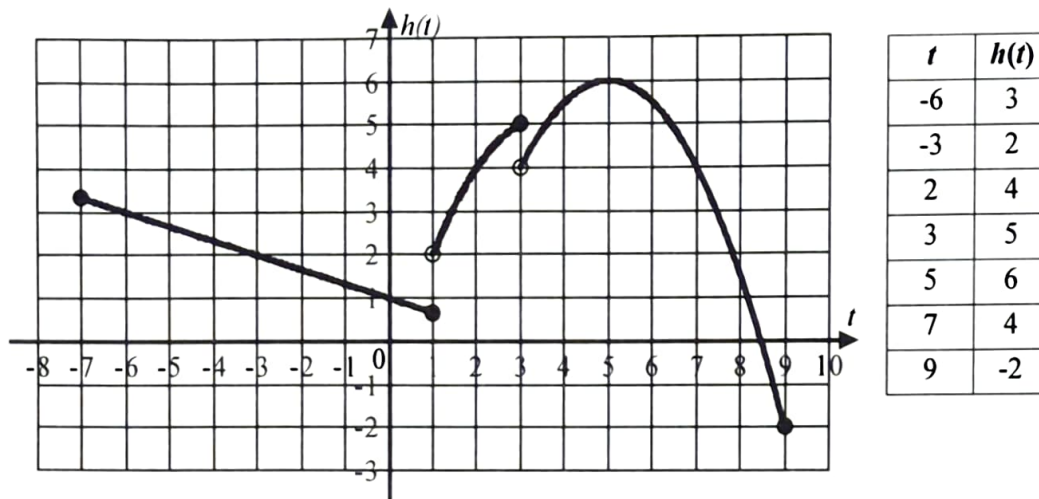


Characteristics of Discontinuous Piecewise Functions

Use the graph of the piecewise function, $h(t)$, and the table to answer the following questions. The point $(3, 5)$ is not the vertex of a parabola, but the point $(5, 6)$ is the vertex of a parabola.



1. What is the value of t where $h(t) = 4$?
2. What is the value of $h(3)$?
3. What are the coordinates of the point where $h(t)$ has an absolute maximum value?
4. On what intervals is $h(t)$
 - a) increasing?
 - b) decreasing?
5.
 - a) What is the domain?
 - b) What is the range?
 - c) At what values of t is h discontinuous?